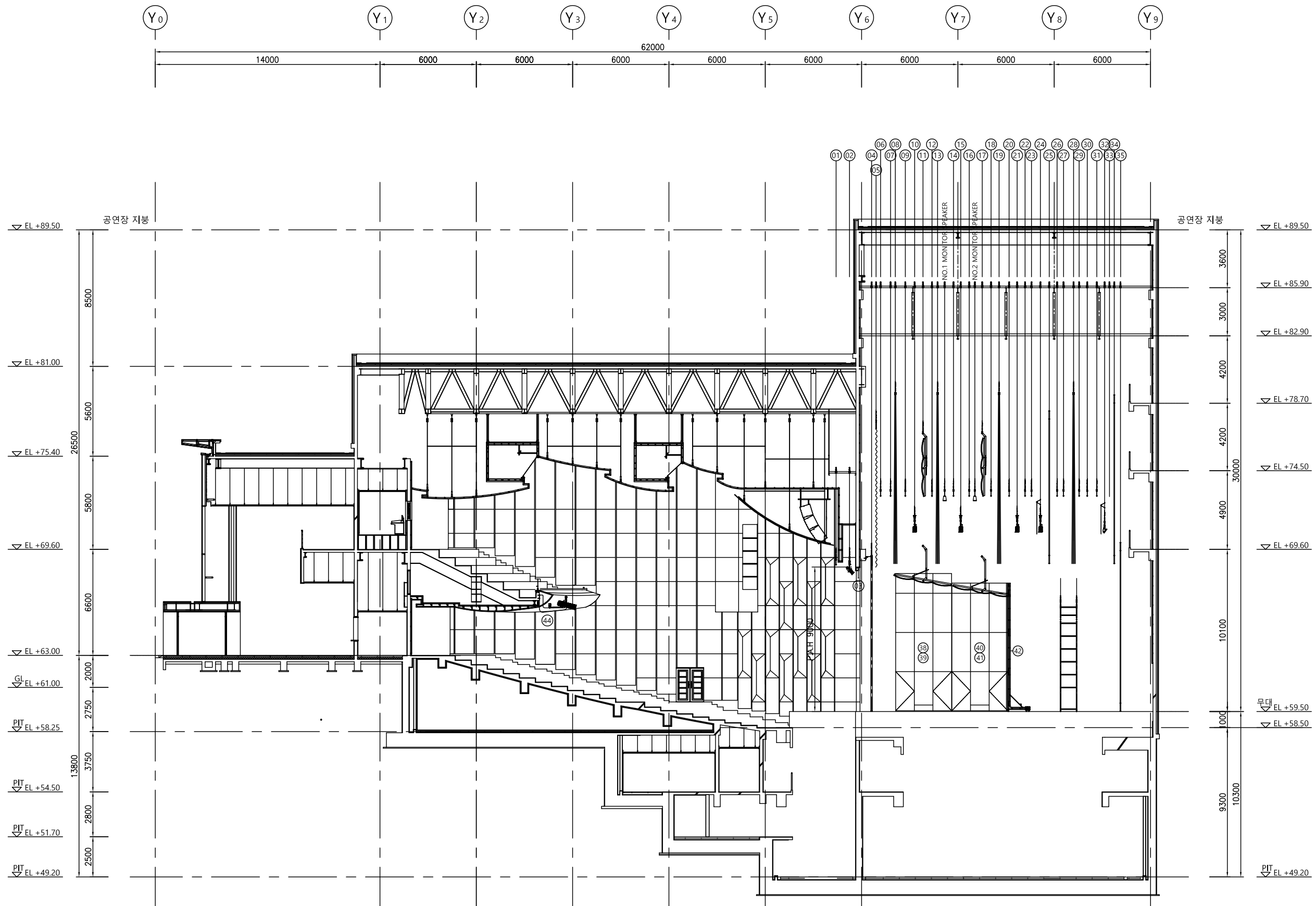


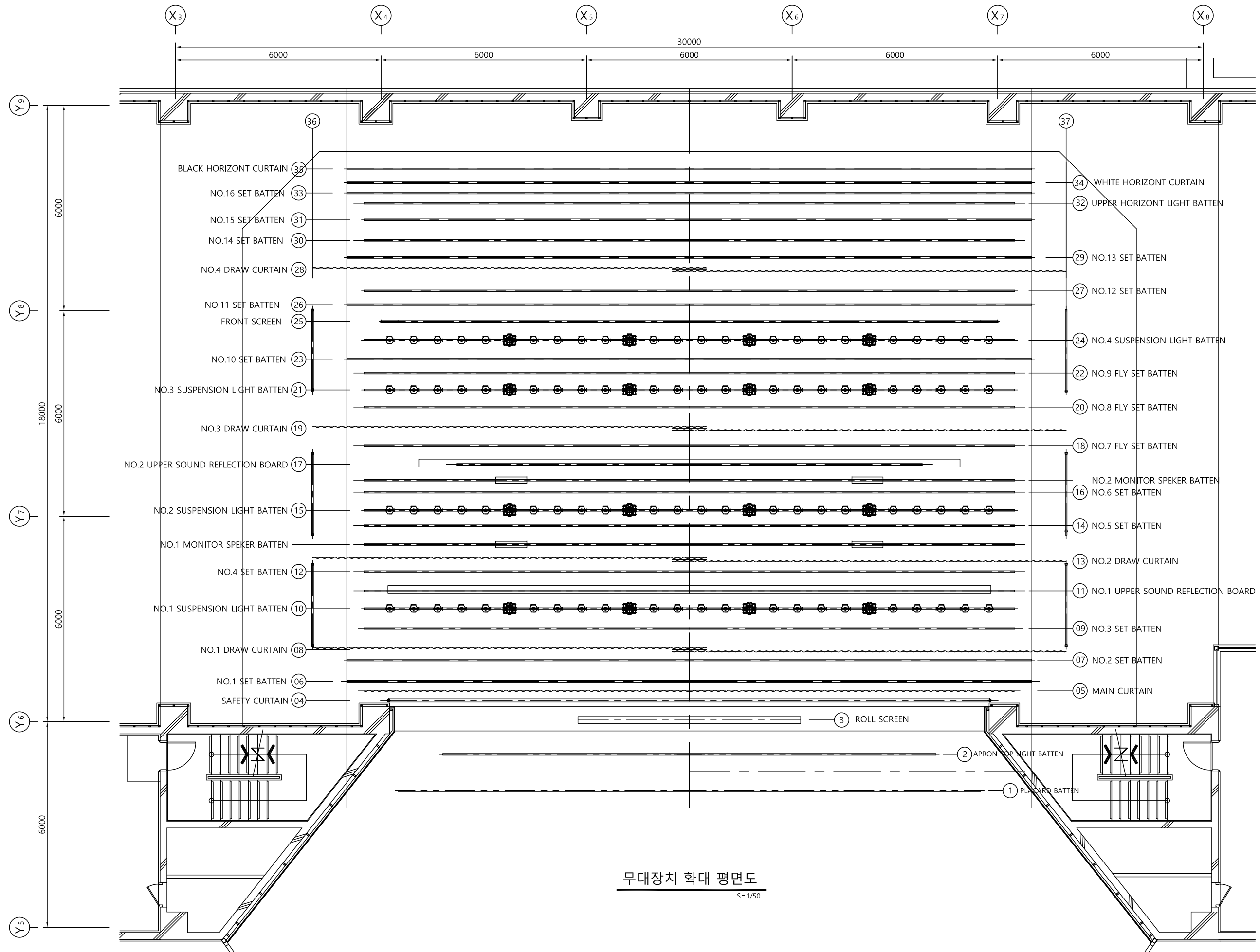
NO	DESCRIPTION	DIMENSION	Q'TY	CONTROL TYPE	MOTOR			사용하중(KG)			SPEED	REMARK
					용 량	종 류	제어방식	자 중	적재하중	총하중		
01	PLACARD BATTEN	17,000L x 1,100H	1	WINCH	3.75(4.0)KW x 4P	AC	INVERTER	200kg	400kg	600kg	1~30 M/MIN	
02	APRON LIGHT BATTEN	15,000L	1	WINCH	3.75(4.0)KW x 4P	AC	INVERTER	250kg	350kg	600kg	1~30 M/MIN	
03	ROLL SCREEN	6,000L x 9,000H	1	-	0.37KW x 2P	AC	직입기동			-	8 M/MIN	
04	SAFETY CURTAIN	17,560L x 9,700H	1	WINCH	7.5Kw x 4P	AC	INVERTER			1,550Kg	1~18 M/MIN	
05	MAIN CURTAIN	20,000L x 12,500H	1	WINCH	3.75KW x 4P	AC	직입기동			500kg	0~40 M/MIN	
06	NO.1 SET BATTEN	20,000L	1	WINCH	11.0Kw x 4P	AC	INVERTER	200kg	600Kg	800Kg	1~60 M/MIN	
07	NO.2 SET BATTEN	20,000L	1	WINCH	11.0Kw x 4P	AC	INVERTER	200kg	600Kg	800Kg	1~60 M/MIN	
08	NO.1 DRAW CURTAIN	22,000L x 10,500H	1	WINCH	5.5Kw x 4P:UP-DN 0.75KWx4P:OP-CL	AC	직입기동			600kg	12 M/MIN 22 M/MIN	
09	NO.3 SET BATTEN	19,000L	1	WINCH	3.75KW x 4P	AC	직입기동	200kg	200Kg	400kg	12 M/MIN	
10	NO.1 SUSPENSION LIGHT BATTEN	20,000L	1	WINCH	5.5Kw x 4P	AC	INVERTER	300kg	500kg	800kg	1~14 M/MIN	
11	NO.1 UPPER SOUND REFLECTION BOARD	17,878L x 3,812H	1	WINCH	5.5Kwx4P:UP-DOWN	AC	INVERTER			2,000kg	1~9 M/MIN	
			1	WINCH	0.75Kwx4P:TILTING	AC	INVERTER			400kg	1~6 M/MIN	
12	NO.4 SET BATTEN	19,000L	1	WINCH	7.5KW x 6P	INVERTER	INVERTER	200kg	300kg	500kg	0~40 M/MIN	
13	NO.2 DRAW CURTAIN	22,000L x 10,500H	1	WINCH	5.5Kw x 4P:UP-DOWN 0.75KWx4P:OP-CL	AC	직입기동			600kg	12 M/MIN 24 M/MIN	
14	NO.5 SET BATTEN	19,000L	1	WINCH	7.5KW x 6P	AC	INVERTER	200kg	300kg	500kg	0~40 M/MIN	
15	NO.2 SUSPENSION LIGHT BATTEN	20,000L	1	WINCH	5.5Kw x 4P	AC	INVERTER	300kg	500kg	800kg	1~14 M/MIN	
16	NO.6 SET BATTEN	19,000L	1	WINCH	7.5KW x 6P	INVERTER	INVERTER	200kg	300kg	500kg	0~40 M/MIN	
17	NO.2 UPPER SOUND REFLECTION BOARD	15,878L x 3,612H	1	WINCH	5.5Kwx4P:UP-DOWN	AC	INVERTER			2,000kg	1~9 M/MIN	
			1	WINCH	0.75Kwx4P:TILTING	AC	INVERTER			400kg	1~6 M/MIN	
18	NO.7 SET BATTEN	19,000L	1	WINCH	7.5KW x 6P	INVERTER	INVERTER	200kg	300kg	500kg	0~40 M/MIN	
19	NO.3 DRAW CURTAIN	22,000L x 10,500H	1	WINCH	5.5Kw x 4P:UP-DOWN 0.75KWx4P:OP-CL	AC	직입기동			600kg	12 M/MIN 24 M/MIN	
20	NO.8 SET BATTEN	19,000L	1	WINCH	7.5KW x 6P	INVERTER	INVERTER	200kg	300kg	500kg	0~40 M/MIN	
21	NO.3 SUSPENSION LIGHT BATTEN	20,000L	1	WINCH	5.5Kw x 4P	AC	INVERTER	300kg	500kg	800kg	1~14 M/MIN	
22	NO.9 SET BATTEN	19,000L	1	WINCH	7.5KW x 6P	INVERTER	INVERTER	200kg	300kg	500kg	0~40 M/MIN	
23	NO.10 SET BATTEN	20,000L	1	WINCH	11.0Kw x 4P	AC	INVERTER	200kg	600Kg	800Kg	1~60 M/MIN	
24	NO.4 SUSPENSION LIGHT BATTEN	19,000L	1	WINCH	5.5Kw x 4P	AC	INVERTER	300kg	500kg	800kg	1~14 M/MIN	
25	FRONT SCREEN	20,000L	1	WINCH	11.0Kw x 4P	AC	INVERTER			800Kg	1~60 M/MIN	
26	NO.11 SET BATTEN	20,000L	1	WINCH	11.0Kw x 4P	AC	INVERTER	200kg	600Kg	800Kg	1~60 M/MIN	
27	NO.12 SET BATTEN	19,000L	1	WINCH	7.5KW x 6P	INVERTER	INVERTER	200kg	300kg	500kg	0~40 M/MIN	
28	NO.4 DRAW CURTAIN	22,000L x 10,500H	1	WINCH	5.5Kw x 4P:UP-DN 0.75KWx4P:OP-CL	AC	직입기동			600kg	12 M/MIN 24 M/MIN	
29	NO.13 SET BATTEN	20,000L	1	WINCH	11.0Kw x 4P	AC	INVERTER	200kg	600Kg	800Kg	1~60 M/MIN	
30	NO.14 SET BATTEN	20,000L	1	WINCH	11.0Kw x 4P	AC	INVERTER	200kg	600Kg	800Kg	1~60 M/MIN	
31	NO.15 SET BATTEN	20,000L	1	WINCH	11.0Kw x 4P	AC	INVERTER	200kg	600Kg	800Kg	1~60 M/MIN	
32	UPPER HORIZONT LIGHT BATTEN	20,000L	1	WINCH	5.5KW x 4P	AC	INVERTER	300kg	400kg	700kg	1~30 M/MIN	
33	NO.16 SET BATTEN	20,000L	1	WINCH	11.0Kw x 4P	AC	INVERTER	200kg	600Kg	800Kg	1~60 M/MIN	
34	WHITE HORIZONT CURTAIN	20,000L	1	WINCH	7.5Kw x 4P	AC	INVERTER			650Kg	1~50 M/MIN	WHITE HORIZONT CURTAIN
35	BLACK HORIZONT CURTAIN	20,000L	1	WINCH	7.5Kw x 4P	AC	INVERTER			650Kg	1~55 M/MIN	BLACK HORIZONT CURTAIN
36	NO.1 SIDE LIGHT BATTEN	2,080L+3,000L+4,000L	1	WINCH	5.5Kw x 4P	AC	INVERTER	250kg	550kg	800kg	1~14 M/MIN	NO.1 SIDE LIGHT BATTEN
37	NO.2 SIDE LIGHT BATTEN	2,080L+3,000L+4,000L	1	WINCH	5.5Kw x 4P	AC	INVERTER	250kg	550kg	800kg	1~14 M/MIN	NO.2 SIDE LIGHT BATTEN
38 39	NO.1,2 SIDE SOUND REFLECTION BOARD	3,588L x 8,500H	2	MANUAL	-	-	-			-	FREE	NO.1,2 SIDE SOUND REFLECTION BOARD
40 41	NO.3,4 SIDE SOUND REFLECTION BOARD	3,588L x 8,000H	2	MANUAL	-	-	-			-	FREE	NO.3,4 SIDE SOUND REFLECTION BOARD
42	FRONT SOUND RELECTION BOARD	3,588L x 8,000H	4	MANUAL	-	-	-			-	FREE	FRONT SOUND RELECTION BOARD
43	ORCHESTRA LIFT		1	LINK CHAIN	30KW x 4P							ORCHESTRA LIFT
44	BALCONY LIGHT FRAME	29,800L	1	FIXED	-	-	-			-		
45	WALL POCKET	C TYPE 30A 4OUTLET	2									

		
		
REV.	Revision Description	Chkd.
PROJECT TITLE		
충북학생교육문화원		
DRAWING TITLE		
무대장치 리스트		
APPROVED DATE		
APPROVED BY		
CHECKED 1		
CHECKED 2		
ENGINEER		
DRAWN BY		
DRAWN DATE		
2018. 09		
SCALE A1 : 1/N A3 : 1/N		
DWG. NO	REV.	
M-A001		



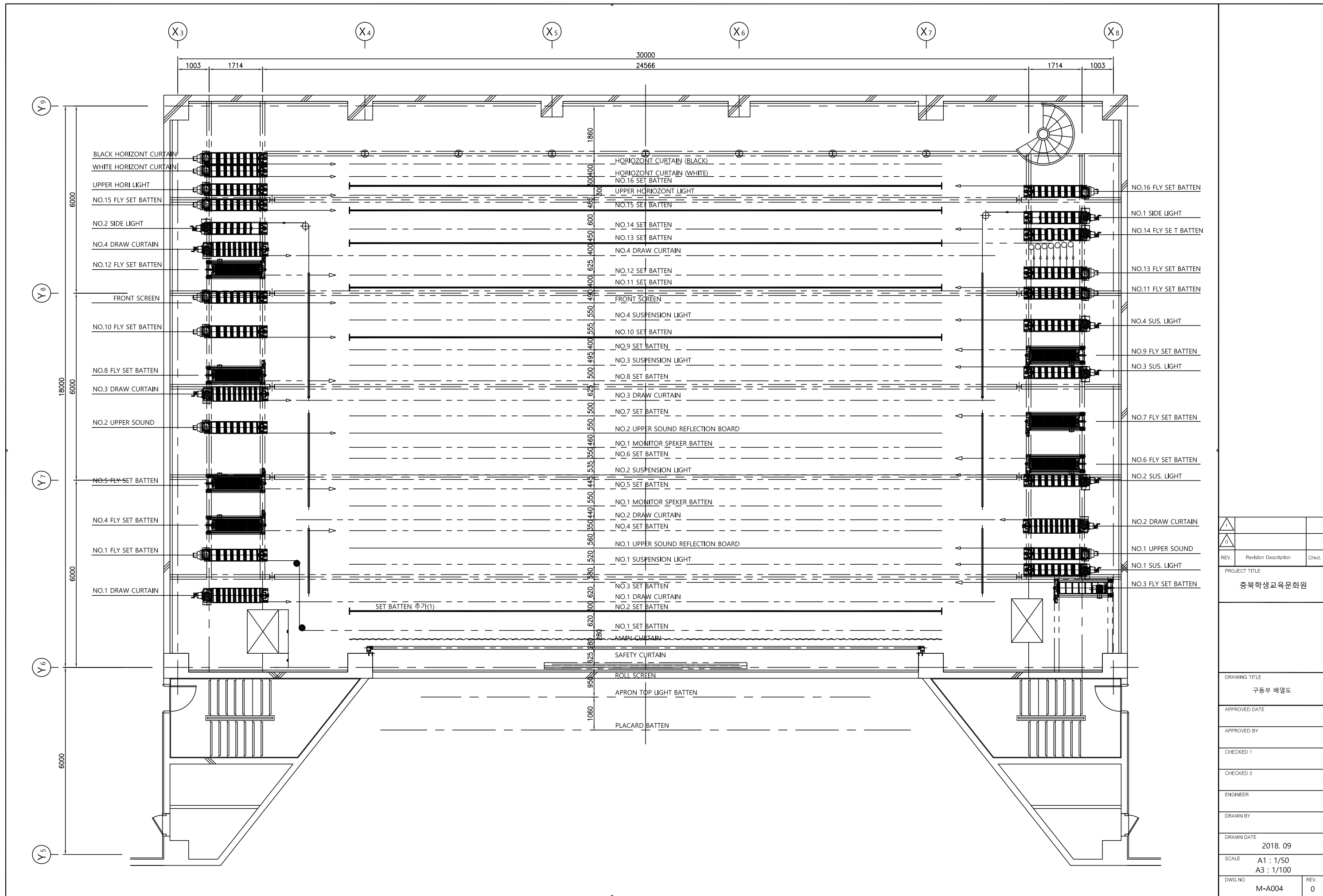
무대장치 단면도
S=1/120

<div><div></div><div></div></div>		
REV.	Revision Description	Chkd.
PROJECT TITLE		
충북학생교육문화원		
DRAWING TITLE		
무대장치 단면도		
APPROVED DATE		
APPROVED BY		
CHECKED 1		
CHECKED 2		
ENGINEER		
DRAWN BY		
DRAWN DATE		
2018. 09		
SCALE		
A1 : 1/120 A3 : 1/240		
DWG. NO	REV.	
M-A002		



무대장치 확대 평면도
S=1/50

1		
0		
REV.	Revision Description	Chkd.
PROJECT TITLE		
충북학생교육문화원		
DRAWING TITLE		
무대장치 확대 평면도		
APPROVED DATE		
APPROVED BY		
CHECKED 1		
CHECKED 2		
ENGINEER		
DRAWN BY		
DRAWN DATE		
2018. 09		
SCALE		
A1 : 1/50		
A3 : 1/100		
DWG. NO	REV.	
M-A003	0	



1		
0		
REV.	Revision Description	Chkd.
PROJECT TITLE		
충북학생교육문화원		
DRAWING TITLE		
구동부 배열도		
APPROVED DATE		
APPROVED BY		
CHECKED 1		
CHECKED 2		
ENGINEER		
DRAWN BY		
DRAWN DATE		
2018. 09		
SCALE		
A1 : 1/50		
A3 : 1/100		
DWG. NO.		REV.
M-A004		0

